

Datasheet

Kerio Connect

EMAIL. CONTACTS. CALENDARS. TASKS.
IN THE OFFICE. ON THE ROAD. AT HOME.

Five Solutions in One

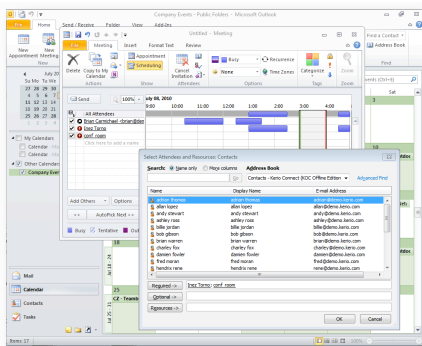
- Cross-platform collaboration** Manage email, access global contacts and schedule meetings in Outlook, Entourage, iCal, web mail and smartphones.
- Wireless mobile synchronization** Synchronize with any smartphone over the air. Delete sensitive data on lost or stolen devices.
- Robust email security** Stop unwanted emails with over 14 anti-spam techniques and dual anti-virus protection.
- Email archiving** Maintain compliance and minimize liabilities.
- Automated backup** Backup and restore data without server downtime.




CROSS-PLATFORM COLLABORATION

Windows savvy

- Manage email and calendars with Microsoft Outlook or Windows Mail and Calendar applications.



Kerio WebMail

- Access full groupware features with Internet Explorer, Safari, and Firefox.
- Use Kerio WebMail as a full-featured groupware alternative to desktop applications.

Global Address List

Provides an easy way to access and view contact information for everyone in the corporate directory from many groupware clients.



WIRELESS MOBILE SYNCHRONIZATION

Increase field productivity

- Push email, calendars, contacts and tasks to mobile workers. Respond to email and meeting invitations while on the go.
- Sync wirelessly over the air with any Exchange ActiveSync® enabled device.
- Natively sync data with BlackBerry Enterprise Server (BES) to BlackBerry devices using the new Kerio Connector for BlackBerry.
- Delete email, calendars and contacts remotely with Kerio Smart Wipe in the event your phone is lost or stolen.

Testimonials

"Exceeding our client's expectations requires almost immediate response time to changes - from project deadlines to creative revisions... Kerio Connect keeps us in constant sync."
— *Michael Borosky*
Creative Director,
Eleven

"Joining iCal and Mail, Address Book in Snow Leopard now ties very neatly to Kerio Connect with the addition of the new CardDAV server. My clients are thrilled to have bidirectional syncing in real time between Kerio and all of their favorite authorized software."
— *Brandon Carter Meixel*
Mission Engineer,
Rocket Science Consulting

"The nice thing about Kerio Connect is that with all the protocols it can speak, it can handle E-mail, calendaring, and resource scheduling for your whole company, no matter what platform or device an employee needs or wants to use."
— *Kevin Anderson*
President and CEO,
Computer Stores Northwest Inc.

Mac friendly

- Kerio Connect is the only Exchange alternative with full and native groupware support for Microsoft Entourage.
- Sync natively with Apple iCal through CalDAV.
- Manage personal and global contacts with Apple Address Book via CardDAV.

Access from the desktop, the web, or mobile device

	Email	Contacts	Calendar	Tasks	Notes	Shared/Public folders
Outlook	✓	✓	✓	✓	✓	✓
Entourage	✓	✓	✓	—	—	✓
Kerio WebMail	✓	✓	✓	✓	✓	✓
Smartphone	✓	✓	✓	✓	—	✓





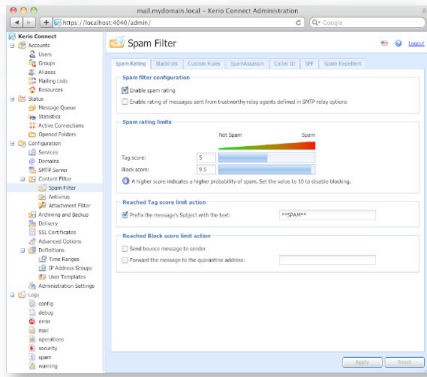
ROBUST EMAIL SECURITY

Block Unwanted Emails with the Power of an Email Security Appliance

Anti-spam protection

Block up to 98% of spam with over 14 anti-spam layers

- Directory Harvest Attack protection.
- Anti-phishing / anti-spoofing.
- Real-time blacklist server.
- Custom whitelists and blacklists.
- SpamAssassin (Bayes, Heuristic, and SURBL).
- SMTP restrictions and more.



Conserve server resources

- Spam Repellent blocks up to 80% of spam before it even reaches the server, reducing the amount of email that needs to be filtered and stored on disk.

Anti-virus protection

- Filter viruses, worms, Trojans and spyware from incoming, outgoing and relayed emails.
- Integrated Sophos anti-virus engine simplifies deployment and optimizes performance.
- Ready-to-use plugins for other anti-virus engines (ClamAV, AVG, NOD32 and Avast).
- Combine Sophos with a second anti-virus engine for double the protection.



EMAIL ARCHIVING

Archiving for compliance or governance

- Archive local, incoming, outgoing and relayed emails.
- View, search and sort through archives for legal discovery or audits.
- Set up mail retention policies per user.



AUTOMATED BACKUP

Easy backup and recovery

- Schedule full or differential backups without having to be present during the backup.
- Run backups without having to stop the mail server.
- Restore user data and server configurations onto another server.
- Recover emptied deleted items for a single user with just a few clicks.

EASE OF ADMINISTRATION

- Ideal for organizations with little or no IT resources.
- Install all components in minutes with one installer.
- Secure remote administration from any browser via the full featured Web Administration.
- Self-contained services - no dependencies on other services such as SMTP, POP, IMAP, LDAP, and HTTP.

FLEXIBLE DEPLOYMENT

- Deploy Kerio Connect on the platform and operating system of your choice – Windows, Mac, Linux – server or desktop.
- Versatile user authentication – integrates with Active Directory, Open Directory, or the built-in Kerio user directory.
- Manage a single email domain across multiple Kerio Connect servers in different geographic locations with Distributed Domain.
- VMware and Parallels virtual appliance options for hypervisor or Cloud-based deployment.

About Kerio Technologies, Inc.

Innovating in Internet security since 1997, Kerio Technologies, Inc. provides Internet messaging and firewall software that is simple, stable, and secure.

Kerio is headquartered in San Jose, California, and has offices in New York, United Kingdom, Germany, Czech Republic and Russia. Kerio is a Microsoft Gold Partner and a member of CalConnect and the Mac Developer Program.

Server Requirements

Windows

Recommended hardware (20-100 users)
2 GHz, 2 GB RAM

Supported operating systems

Windows 2000/XP/Vista/7
Windows Server 2003/2008

Linux

Recommended hardware (20-100 users)
2 GHz, 2 GB RAM

Supported operating systems

Red Hat Enterprise Linux 4-5.5
CentOS 5.2
SUSE Enterprise 10/11
openSUSE 11-11.2
Debian 5.0
Ubuntu 8.04 LTS/10.04 LTS

Mac OS X

Recommended hardware (20-100 users)

PowerPC G5 or Intel Core, 2 GB RAM

Supported operating systems

Mac OS X 10.4/10.5/10.6 Server or Desktop

Virtual Appliance

VMware Player/Workstation/ESX Server
Parallels 4.0 Desktop/Server for Mac

Client Requirements

Windows

Outlook XP/2003/2007/2010

Windows Mail

Windows Calendar

Mac OS X

Entourage 2004/ 2008

Apple Mail

Apple iCal

Apple Address Book

Web browser

Internet Explorer 6/7/8

Firefox 2/3

Safari 3/4/5

Certifications



© 2010 Kerio Technologies, Inc. All rights reserved. The names of actual companies and products mentioned herein may be the trademarks of their respective owners.
Published 08/2010

